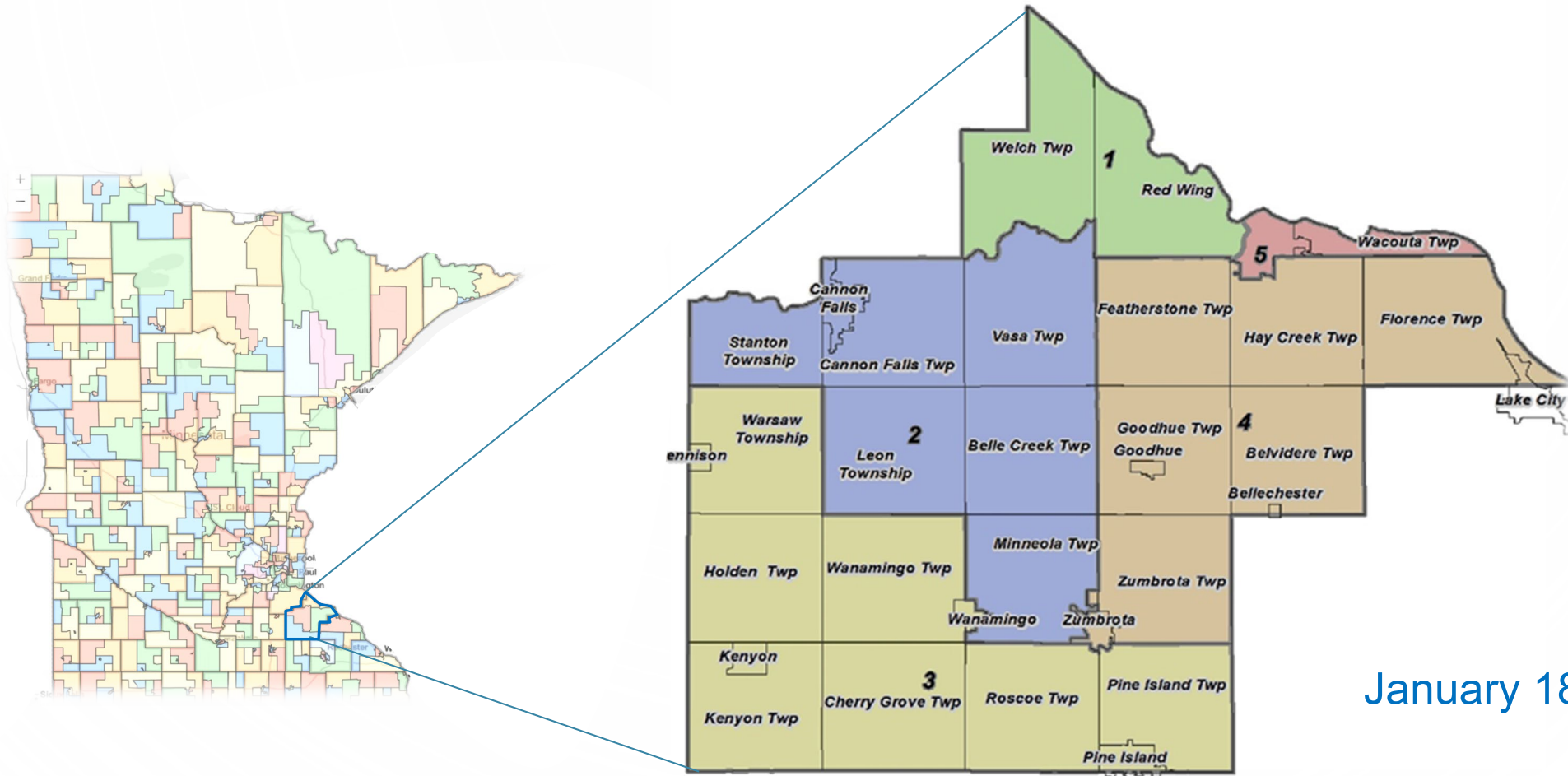


GOODHUE COUNTY 2022 REDISTRICTING



January 18, 2022

Presentation Overview

- REDISTRICTING RECAP
- REDISTRICTING TIMELINES
- REDISTRICTING OPTIONS

Redistricting Recap

10% RULE

- District populations cannot vary more than ten percent from the average for all districts in the county, unless the result forces a voting precinct to be split. (M.S. 375.025, subd. 1)

Calculation:

- County population / by commissioner districts x 10% = Threshold
- $47,582 / 5 = 9,516$
- $9,516 \times 10\% = \mathbf{952 \text{ Threshold}}$
- All districts must be in the range of 8,565–10,468 residents

5% Rule

- If the commissioner's district has had a change greater than the 5% Rule, then they would have to run again in the next election.
 - County population is 47,582 with 5 commissioners
 - Average population is 9,516
 - The Threshold is $9,516 \times 5\% = 476$

2020 Census Population

Goodhue Population

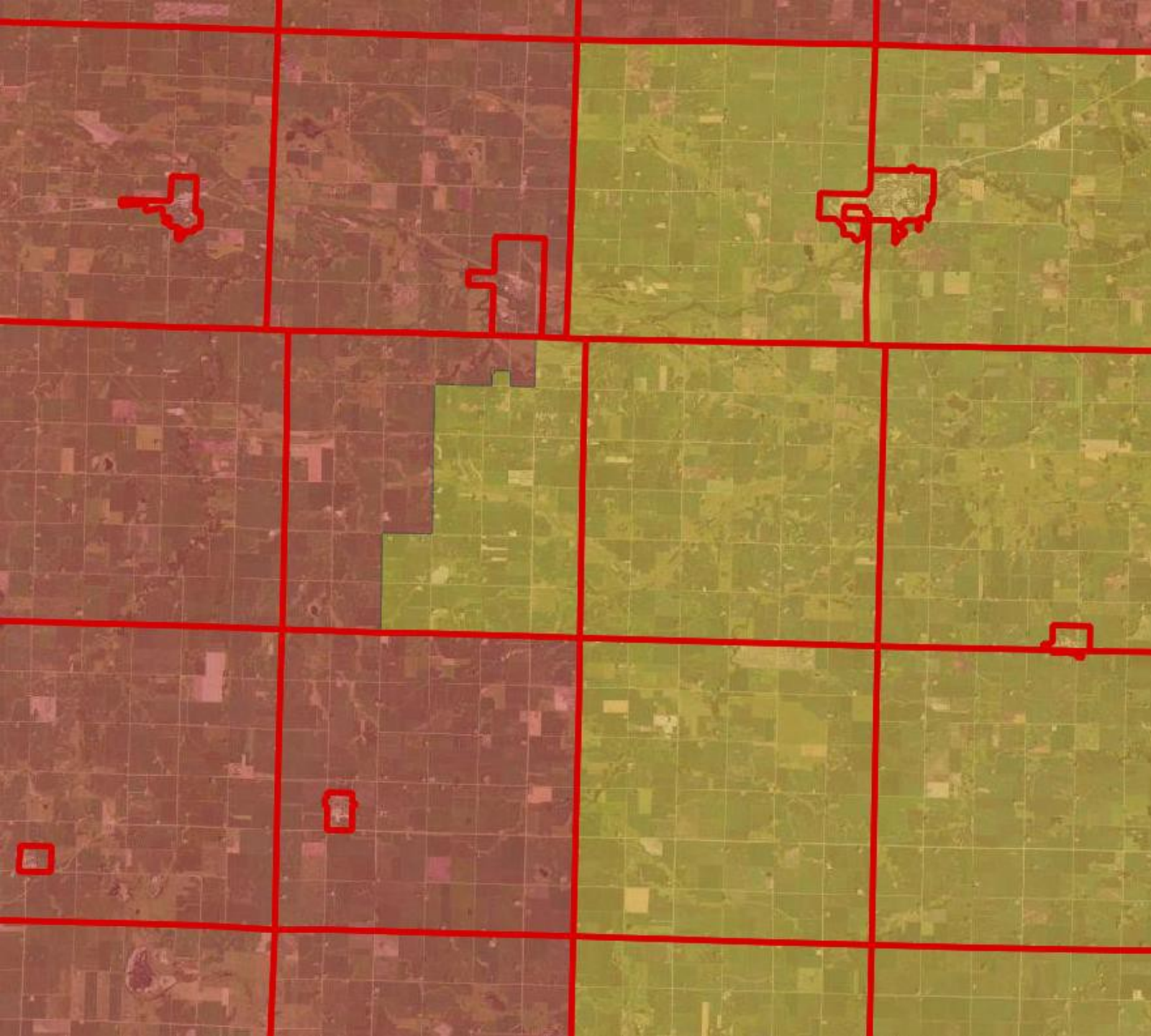
- District 1 9,101
- District 2 9,345
- District 3 9,567
- District 4 10,892
- District 5 8,677

Redistricting Parameters

- Total Pop. 47,582
- District Avg. 9,516
- 5% Threshold 476
- 10% Threshold 952
- District Range 8,565 - 10,468

County Commissioner District Requirements

- As many Districts as Commissioners
- District bounded by precinct lines
- Contiguous territory
- Regular and compact
- 10% Rule
- 5% Rule
- Set Commissioner terms
- Plan filed with State Auditor



Congressional &
Legislative
boundaries
can go anywhere

Don't need to
follow municipal
boundaries

If the state splits
a precinct, our
plan is that both
stay in the same
commissioner
district

Goodhue County Cities with Multiple Precincts

- Cannon Falls City
 - City elects members at large
- Red Wing City
 - City elects members by wards and at large
 - They have ran their population numbers
 - At this time they anticipate no changes
- Zumbrota City
 - City elects members at large

Redistricting Timelines

2022 Election Timeline

February 1 st	Precinct Caucuses
February 8 th	February Uniform Election Date
February 15th	Legislative Redistricting (intended deadline)
March 8 th	Township Elections
March 29th	Precinct & Ward Redistricting Deadline
April 26th	County & Other Redistricting Deadline
May 17 th	State/County Filing Period Opens
August 9 th	State Primary Election
November 8 th	State General Election

2022 Redistricting Timeline

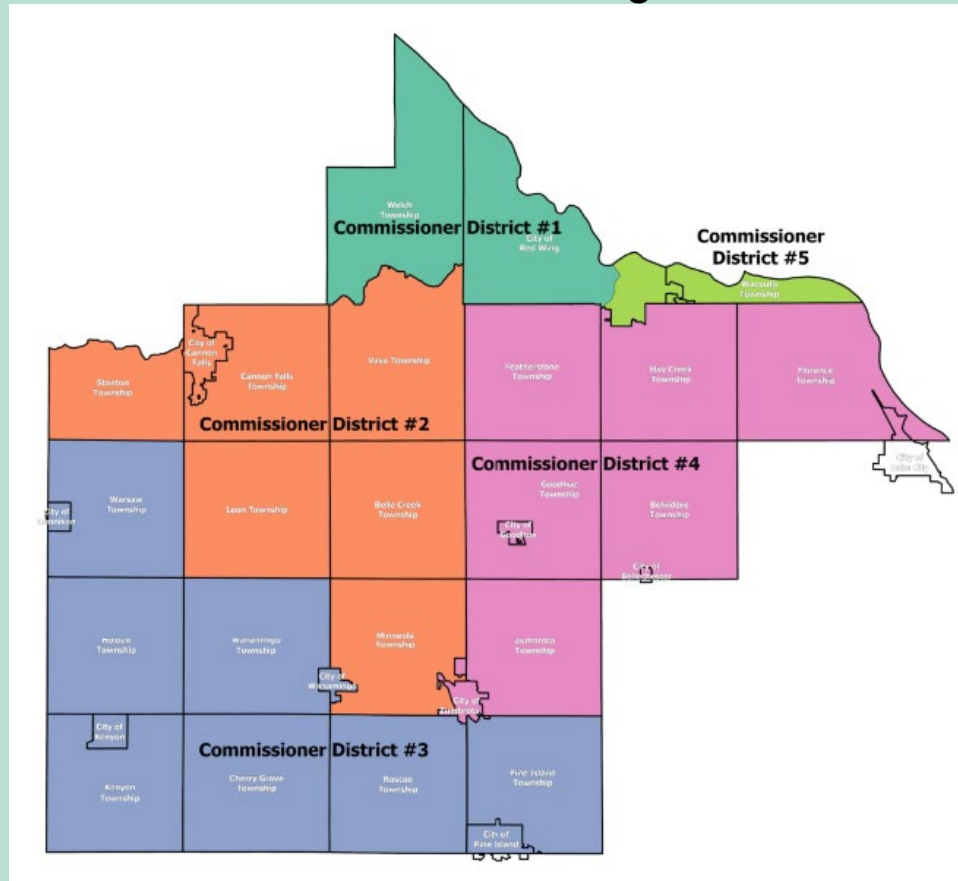
January 18 th	Preliminary Redistricting Plan Presented
February 15th	Legislative Redistricting (intended deadline)
March 9 th	Notice of Intent to Redistrict is Published
March 28 th	Deadline for the Public to Submit a Plan
March 29th	Precinct & Ward Redistricting Deadline
April 5 th	County holds Public Comment Meeting
April 5 th	County Approves Redistricting Plan
April 26th	County & Other Redistricting Deadline
April 27 th	Redistricting Information is Published

Redistricting Options

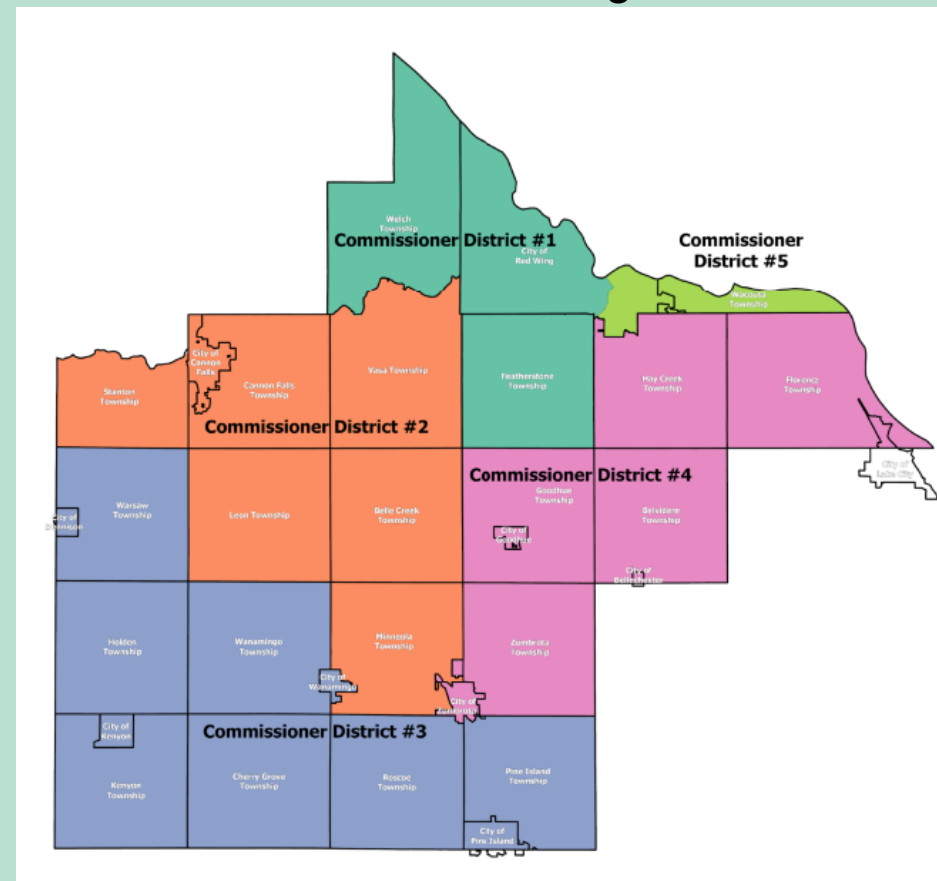
Redistricting Option 1

Move Featherstone from Commissioner District 4 to Commissioner District 1

Before Redistricting



After Redistricting



Redistricting Option 1 – 10% Rule

Population Before Redistricting

- District 1 9,101
- District 2 9,345
- District 3 9,567
- District 4 10,892
- District 5 8,677

Population After Redistricting

- **District 1 9,846**
- District 2 9,345
- District 3 9,567
- **District 4 10,147**
- District 5 8,677

10% Rule - all districts must be in the range of 8,565–10,468 residents

Redistricting Option 1 – 5% Rule

Commissioner District 1

- Shift in = 745 Shift out = 0 Total Shift = 745 Must run due to 5% rule

Commissioner District 2

- Shift in = 0 Shift out = 0 Total Shift = 0 Must run as term is up

Commissioner District 3

- Shift in = 0 Shift out = 0 Total Shift = 0

Commissioner District 4

- Shift in = 0 Shift out = 745 Total Shift = 745 Must run as term is up

Commissioner District 5

- Shift in = 0 Shift out = 0 Total Shift = 0

Commissioner's district that have a change greater than 5% must run again in the next election.
In Goodhue County that number equates to 476.

Redistricting Option 1 – Terms

Commissioner Dist. 1 – 2 yr Term

- 2018
 - Districts 2 and 4
- 2020
 - Districts 1, 3 and 5
- 2022
 - Districts 1, 2 and 4
- 2024
 - Districts 1, 3 and 5
- 2026
 - Districts 2 and 4

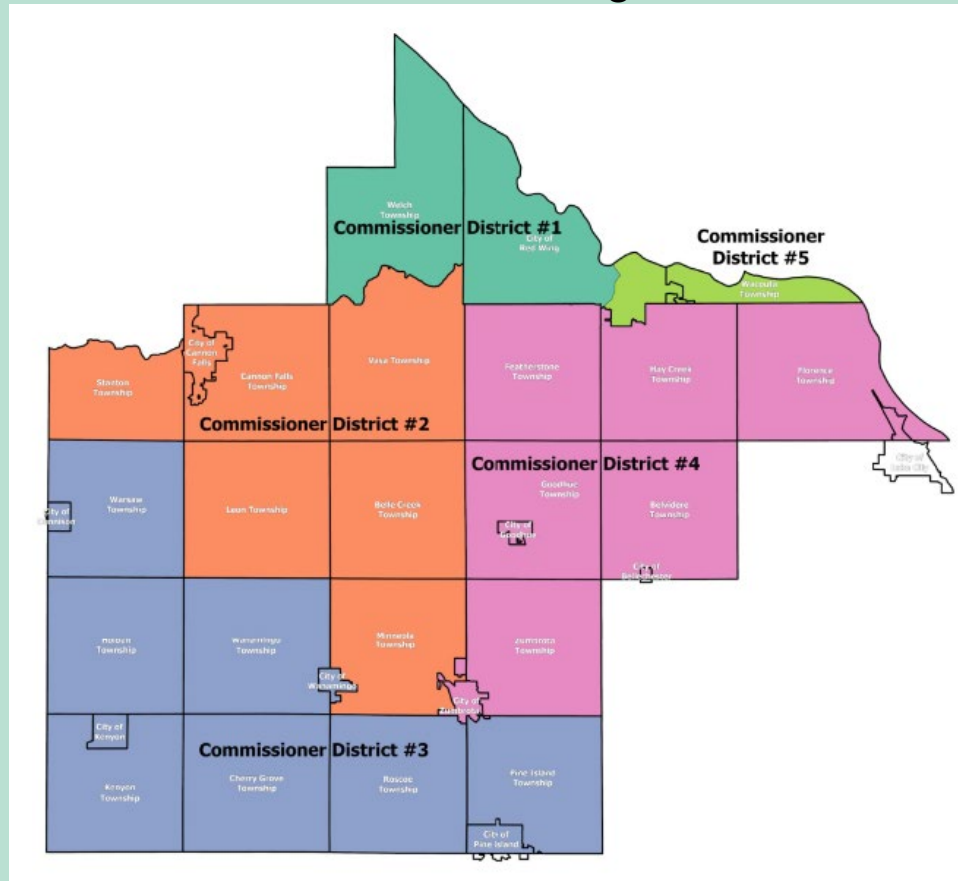
Commissioner Dist. 1 – 4 yr Term

- 2018
 - Districts 2 and 4
- 2020
 - Districts 1, 3 and 5
- 2022
 - Districts 1, 2 and 4
- 2024
 - Districts 3 and 5
- 2026
 - Districts 1, 2 and 4

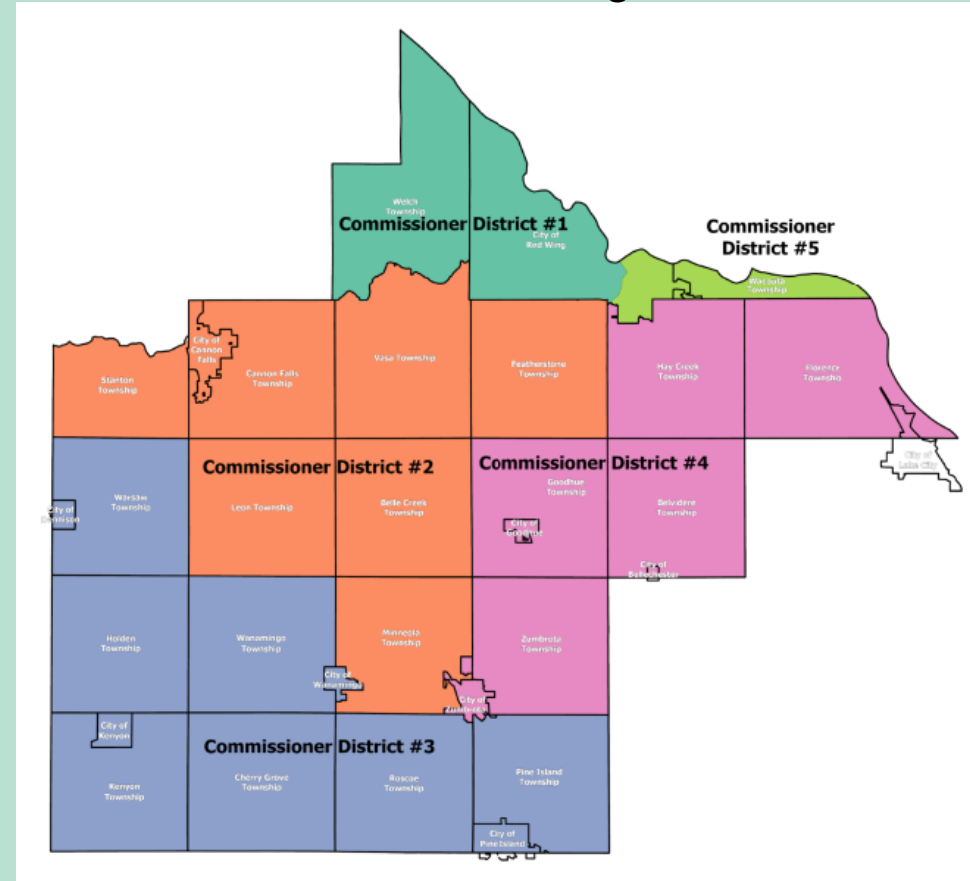
Redistricting Option 2

Move Featherstone from Commissioner District 4 to Commissioner District 2

Before Redistricting



After Redistricting



Redistricting Option 2 – 10% Rule

Population Before Redistricting

- District 1 9,101
- District 2 9,345
- District 3 9,567
- District 4 10,892
- District 5 8,677

Population After Redistricting

- District 1 9,101
- **District 2 10,090**
- District 3 9,567
- **District 4 10,147**
- District 5 8,677

10% Rule - all districts must be in the range of 8,565–10,468 residents

Redistricting Option 2 – 5% Rule

Commissioner District 1

- Shift in = 0 Shift out = 0 Total Shift = 0

Commissioner District 2

- Shift in = 745 Shift out = 0 Total Shift = 745 Must run as term is up

Commissioner District 3

- Shift in = 0 Shift out = 0 Total Shift = 0

Commissioner District 4

- Shift in = 0 Shift out = 745 Total Shift = 745 Must run as term is up

Commissioner District 5

- Shift in = 0 Shift out = 0 Total Shift = 0

Commissioner's district that have a change greater than 5% must run again in the next election.
In Goodhue County that number equates to 476.

Redistricting Option 2 – Terms

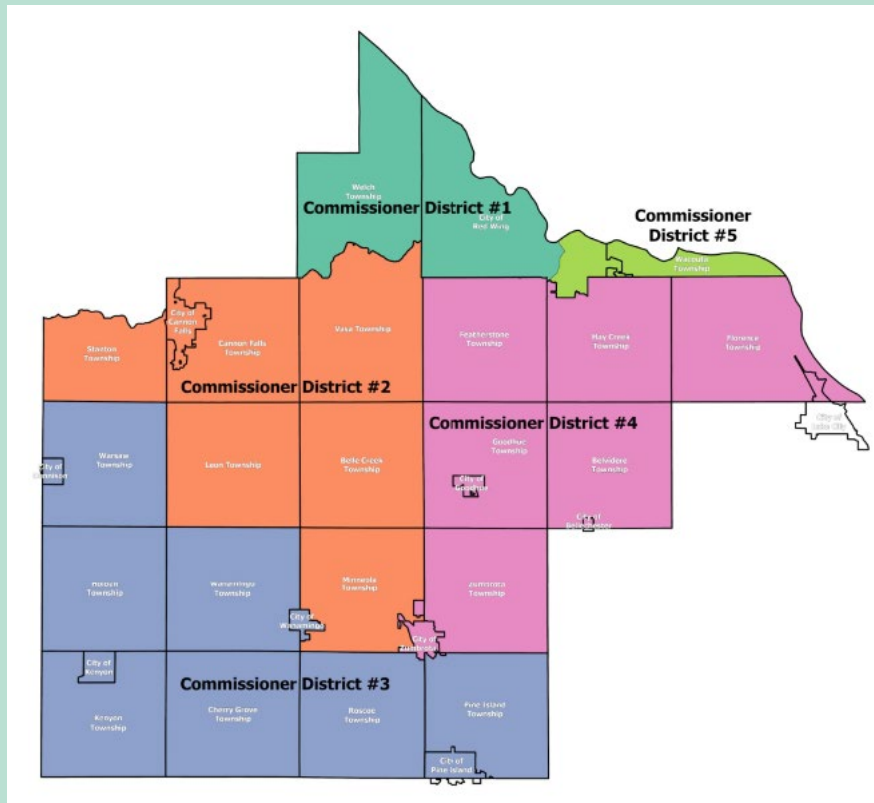
Terms

- 2018
 - Districts 2 and 4
- 2020
 - Districts 1, 3 and 5
- 2022
 - Districts 2 and 4
- 2024
 - Districts 1, 3 and 5
- 2026
 - Districts 2 and 4

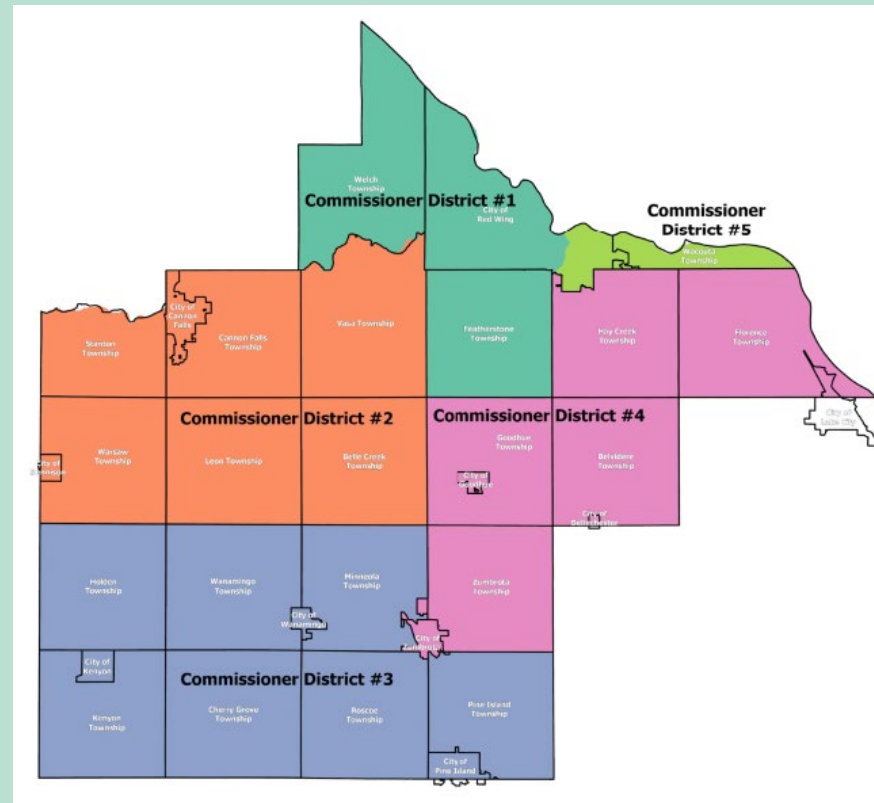
Redistricting Option 3

- Move Featherstone from Commissioner Dist. 4 to Commissioner Dist. 1
- Move Dennison and Warsaw from Commissioner Dist. 3 to Commissioner Dist. 2
- Move Minneola from Commissioner Dist. 2 to Commissioner Dist. 3

Before Redistricting



After Redistricting



Redistricting Option 3 – 10% Rule

Population Before Redistricting

- District 1 9,101
- District 2 9,345
- District 3 9,567
- District 4 10,892
- District 5 8,677

Population After Redistricting

- **District 1 9,846**
- **District 2 9,525**
- **District 3 9,387**
- **District 4 10,147**
- District 5 8,677

10% Rule - all districts must be in the range of 8,565–10,468 residents

Redistricting Option 3 – 5% Rule

Commissioner District 1

- Shift in = 745 Shift out = 0 Total Shift = 745 Must run due to 5% rule

Commissioner District 2

- Shift in = 807 Shift out = 627 Total Shift = 1,434 Must run as term is up

Commissioner District 3

- Shift in = 627 Shift out = 807 Total Shift = 1,434 Must run due to 5% rule

Commissioner District 4

- Shift in = 0 Shift out = 745 Total Shift = 745 Must run as term is up

Commissioner District 5

- Shift in = 0 Shift out = 0 Total Shift = 0

Commissioner's district that have a change greater than 5% must run again in the next election.
In Goodhue County that number equates to 476.

Redistricting Option 3 – Terms

TERM OPTION 1

- 2018
 - Districts 2 and 4
- 2020
 - Districts 1, 3 and 5
- 2022
 - Districts 1, 2, 3 and 4
- 2024
 - Districts 1, 3 and 5
- 2026
 - Districts 2 and 4

TERM OPTION 2

- 2018
 - Districts 2 and 4
- 2020
 - Districts 1, 3 and 5
- 2022
 - Districts 1, 2, 3 and 4
- 2024
 - Districts 3 and 5
- 2026
 - Districts 1, 2 and 4

TERM OPTION 3

- 2018
 - Districts 2 and 4
- 2020
 - Districts 1, 3 and 5
- 2022
 - Districts 1, 2, 3 and 4
- 2024
 - Districts 1 and 5
- 2026
 - Districts 2, 3 and 4

Redistricting Option - Review

OPTION 1

- 2022 Commissioner Races
 - District 1
 - District 2
 - District 4

OPTION 2

- 2022 Commissioner Races
 - District 2
 - District 4

OPTION 3

- 2022 Commissioner Races
 - District 1
 - District 2
 - District 3
 - District 4

Redistricting Questions & Board Direction

Canvassing Board

- Canvassing board is made up of the county auditor, court administrator, mayor of the largest city and two county commissioners who were not candidates in the election.
 - Three members constitute a quorum.
- State Primary Election
 - Requirement: Meets the 2nd or 3rd day following the election
 - Proposed Date & Time: August 12th @ 8:30
 - **County Board Members:**
- State General Election
 - Requirement: Meets between the 3rd and 10th day following the election
 - Proposed Date & Time: November 16th @ 8:30
 - **County Board Members:**

Redistricting Resources

MN Secretary of State

www.sos.state.mn.us/election-administration-campaigns/election-administration/redistricting/?searchTerm=redistricting

Goodhue County

<https://co.goodhue.mn.us/1415/Redistricting>